



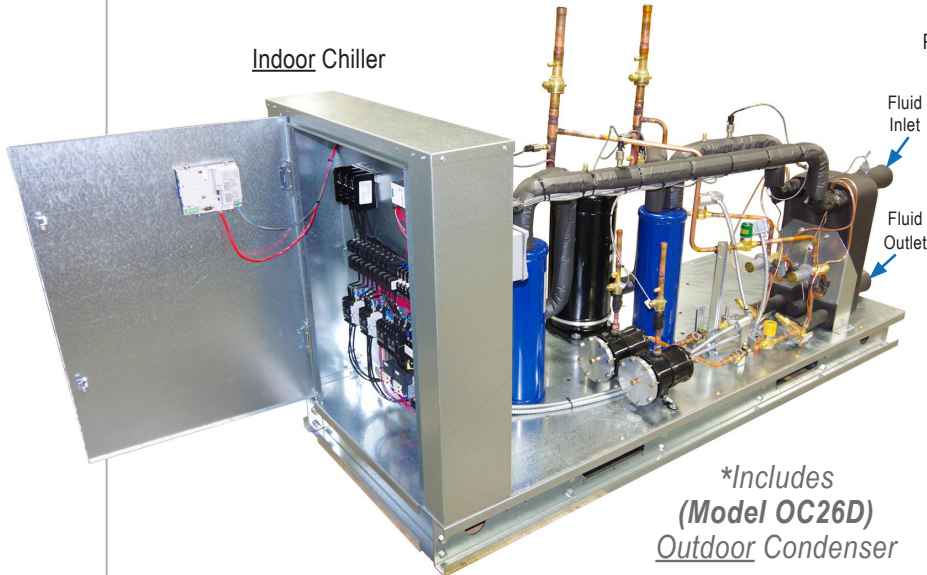
*It's All about Building a
Better Product for Our Clients!*

J&M Fluidics, Inc.
851 Tech Drive
Telford, PA 18969
Toll-Free: (888) 539-1731
Fax: 267-203-8786

Model: IEZA26D

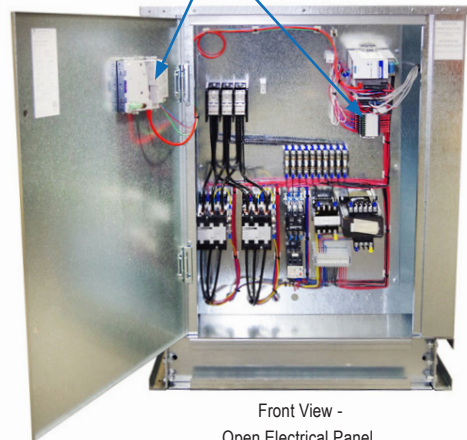
Split-System, Air-Cooled 26 Ton Chiller

Indoor Chiller



**Includes
(Model OC26D)
Outdoor Condenser*

STANDARD ON ALL J&M MODELS:
Pentra Microsmart, Programmable Logic Controller (PLC)
with HMI Touch Screen Display.



Front View -
Open Electrical Panel

Standard Features:

- ETL listed to UL1995 & CAN/CSA C22.2 No. 236-11, 4th edition, 10/14/2011
- Single point power connection
- Pentra Microsmart, Programmable Logic Controller (PLC) with easy to use HMI touch screen display
- STAINLESS STEEL, brazed plate evaporator
- Scroll compressor with crankcase heater
- Suction accumulator
- Water flow switch
- Hot gas by-pass capacity control
- 24V control transformer
- Direct drive condenser fan motor
- Rust resistant, high CFM, aluminum condenser fan blade
- Condenser(s): copper tube/aluminum fin
- Compressor motor contactor
- Condenser motor and control circuit fusing
- Painted (Powder Coated), galvanized sheet metal cabinet
- 1/2" insulation on all water and Low pressure refrigerant lines
- Liquid line drier, sight glass, solenoid, TXV
- Complete refrigerant charge from factory
- Factory Performance Test prior to shipment



Options:

- Remote Idec touchscreen control panel
- Industrial VPN Router
- 5 Port Ethernet Switch
- BacNet Gateway
- Process Pump VFD Controller
- VFD Compressor Control on primary compressor
- 4 year extended compressor warranty
- Casters (factory mounted)
- 115 volt (rain tight) service outlet
- Non Fused Disconnect
- Phase Monitor, line voltage monitor offering protection against phase loss/reversal, unbalance and High/Low voltage
- Compressor fusing
- Compressor Sound Cover
- Flooded cond. w/receiver/head pressure control (0°F)
- Heated, flooded cond. w/receiver/head pressure Water flow meter control (-20°F)
- Pump suction isolation valve
- Water pressure gauge set
- Copper finned condenser coil (coastal protection)
- Coastal powder coat paint protection
- E-Coat Condenser Coil (coastal protection)
- Water Flow Meter
- Auto city water make up solenoid & auto level switch
- Auto city water changeover panel with filter
- Stainless steel, SCH80 PVC or Polypropylene piping for deionize and reverse osmosis water systems
- Door Mounted HMI with weather proof cover



*Easy to Use
Touch Screen Display
on ALL J&M Chiller
Models*

J&M FLUIDICS, INC. – PRODUCT DATA SHEET



It's All about Building a Better Product for Our Clients!

J&M Fluidics, Inc.

851 Tech Drive
Telford, PA 18969

Toll-Free: (888) 539-1731

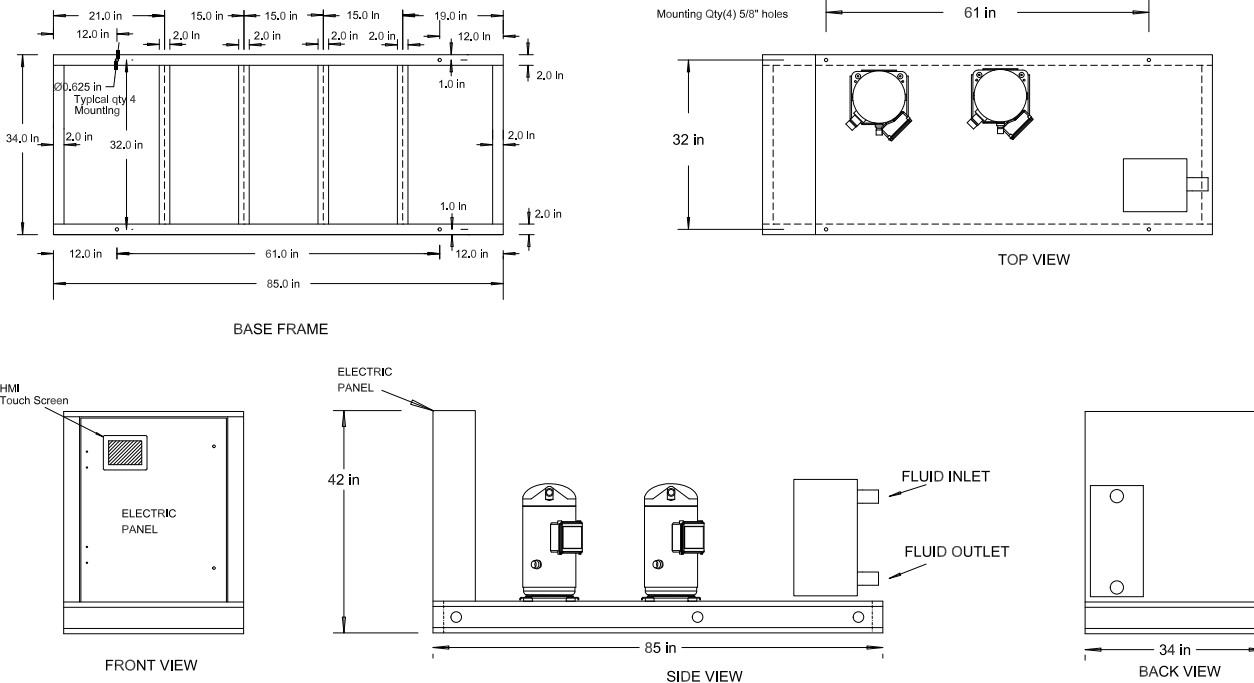
Fax: 267-203-8786

Model: IEZA26D

Split-System, Air-Cooled 26 Ton Chiller

Product Dimensional Drawing

© Property of J&M Fluidics, Inc.



Dimensional & Electrical Table (Dual Circuit)

| Chiller Models | Length Inches | Width Inches | Height Inches | Power | | | Compressor | | RLA ea. | LRA ea. | Fan Motor | | MCA | M.O.P | Chiller Fluid Conn. | Weight LBS. | Condenser Selection | | | |
|----------------|---------------|--------------|---------------|----------|-------|-------|------------|----|---------|---------|-----------|------|-----|--------|---------------------|-------------|---------------------|-----|----|-----|
| | | | | Voltage | Phase | Freq. | Qty. | HP | | | Qty. | FLA. | | | | | | | | |
| IEZA26DF5 | 85 | 34 | 42 | 208/230V | 3 | 60Hz | 2 | 15 | 53.8 | 340 | 7 | 150 | 200 | 2" FPT | 1500 | BNH217 | | | | |
| IEZA26DH5 | | | | 460V | 3 | 60Hz | | | 28.2 | 173 | | | | | | | 2 | 3.5 | 80 | 100 |
| IEZA26DI5 | | | | 575V | 3 | 60Hz | | | 22.4 | 132 | | | | | | | 2 | 2.8 | 70 | 80 |

OC26D (Outdoor Condenser Specs)

| Condenser Model | Length Inches | Width Inches | Height Inches | Fan Motor | | Refrigerant Connections | | Weight / lbs. |
|-----------------|---------------|--------------|---------------|-----------|-------|-------------------------|----------|---------------|
| | | | | Qty. | HP | Discharge | Liquid | |
| OC26D | 127 | 46 | 49 | 2 | 1 1/2 | 1 1/8" (2) | 5/8" (2) | 680 |

Capacity Table (Refrigerant R407C)

| Model | Compressor | LWT °F | 80°F | | | 90°F | | | 95°F | | | 100°F | | | 105°F | | |
|-------|------------|--------|------|------|------|------|------|------|-------------|-------------|------------|-------|------|-----|-------|------|-----|
| | | | TONS | KW | EER | TONS | KW | EER | TONS | KW | EER | TONS | KW | EER | TONS | KW | EER |
| 26D | ZR114KCE | 42.0 | 26.0 | 23.4 | 10.9 | 24.8 | 26.0 | 9.5 | 24.2 | 27.5 | 8.9 | 23.7 | 28.9 | 8.3 | 23.0 | 30.5 | 7.7 |
| | | 44.0 | 26.7 | 23.5 | 11.2 | 25.2 | 26.2 | 9.7 | 24.9 | 27.6 | 9.1 | 24.3 | 29.1 | 8.5 | 23.7 | 30.7 | 7.9 |
| | | 45.0 | 27.2 | 23.6 | 11.3 | 25.9 | 26.3 | 9.9 | 25.3 | 27.7 | 9.2 | 24.8 | 29.2 | 8.6 | 24.1 | 30.8 | 8.0 |
| | | 50.0 | 29.1 | 23.9 | 12.0 | 27.8 | 26.6 | 10.5 | 27.1 | 28.1 | 9.7 | 26.5 | 29.9 | 9.1 | 25.8 | 31.1 | 8.5 |

- Capacities on this chart are based on refrigerant R407C. Lower leaving water or low ambient can require the use of a glycol solution or other fluid blends. These solutions affect unit capacities. Please consult the factory on these or other special fluids.
- KW input is for compressor(s) only.
- EER = Energy Efficiency Ratio (BTU/watt-hour). Power inputs include compressor (s), condenser fan motor (s) and control power.