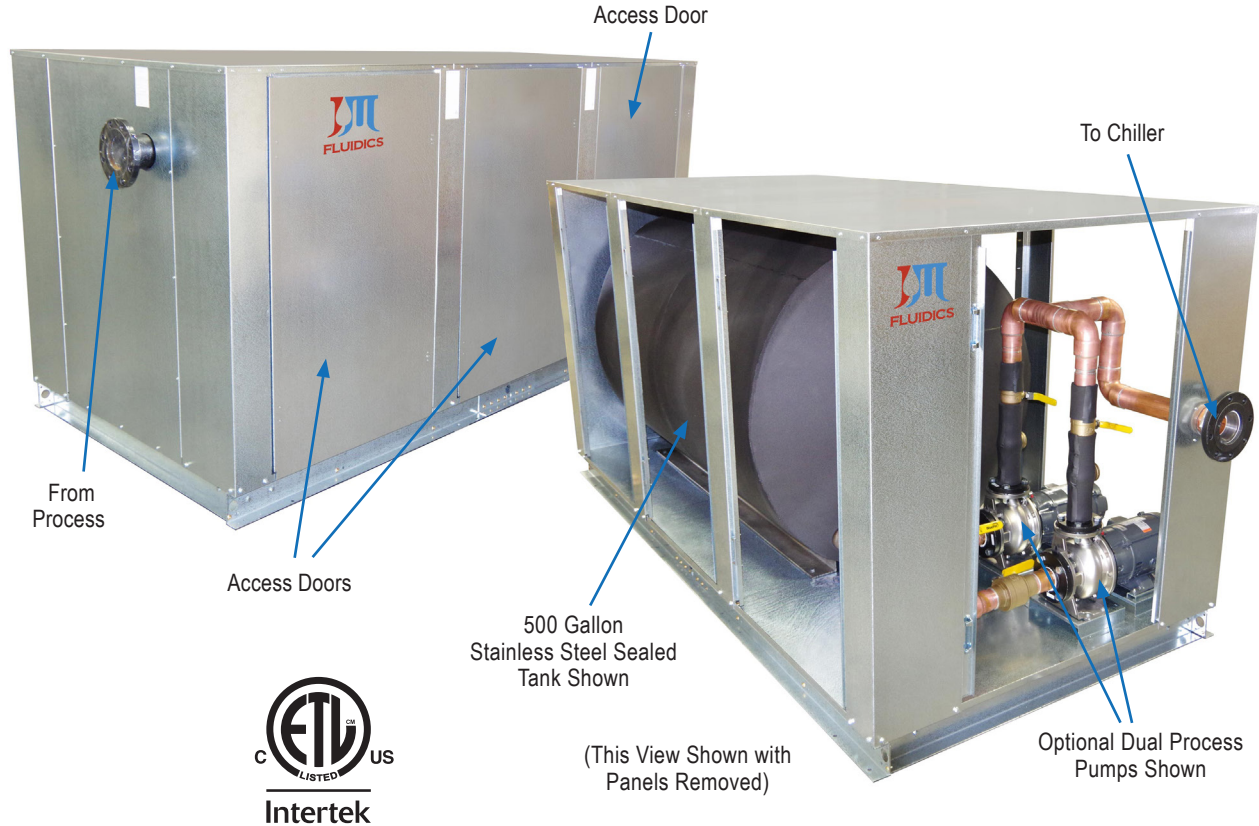


It's All about Building a Better Product for Our Clients!

J&M Fluidics, Inc.
 851 Tech Drive
 Telford, PA 18969
 Toll-Free: (888) 539-1731
 Email: info@jmchillers.com

J&M FLUIDICS, INC. – PRODUCT DATA SHEET

Model: RRT500-SS 500 Gallon Process Tank & Pump Package



(Stainless Steel Tank)
Standard Features:

- **STAINLESS STEEL** recirculation tank
- 500 gallon tank size
- 1/2" tank and fluid piping insulation
- Copper fluid piping
- Tank vent and drain connections
- Tank pressure relief valve
- Fused, **STAINLESS STEEL** evaporator recirculating pump
- Recirculation pump discharge ball valve and cleanable "Y" strainer
- Control box with pump terminal block
- Galvanized steel sheet metal cabinet

Available Options:

- Fused, **STAINLESS STEEL** process pump
- Dual process pump with manual changeover
- Dual process pump with auto changeover
- Pump suction isolation valve
- **Process Pump VFD Controller**
- **Tank fluid sight glass**
- Tank liquid level indicator with dry contacts
- Low flow by-pass valve
- **Water flow meter**
- Auto city water make up solenoid
- 1" tank and piping insulation in lieu of 1/2"
- Seal-tight electrical conduit and connections
- **Painted - Powder Coated**





It's All about Building a Better Product for Our Clients!

J&M Fluidics, Inc.
 851 Tech Drive
 Telford, PA 18969
 Toll-Free: (888) 539-1731
 Email: info@jmchillers.com

Model: RRT500-SS

500 Gallon Process Tank & Pump Package

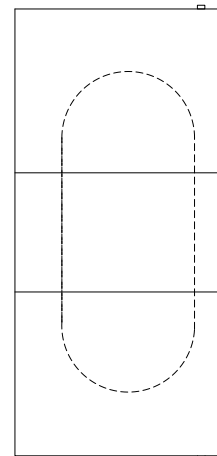
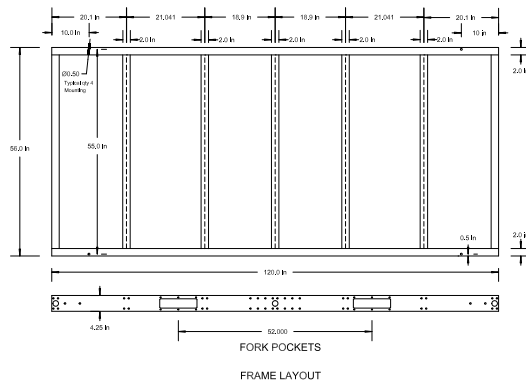
Product Dimensional Drawing

© Property of J&M Fluidics, Inc.

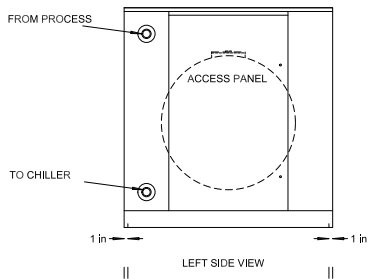


Stainless Steel Tank & Pump

Tank Model	Length Inches	Width Inches	Height Inches	Water Conn.	Tank Capacity	Recirculation Pump	FLA 230/30	FLA 460/3Ø	Weight Lbs.
RRT500	120	56	60	3" FPT	500 Gallons	5HP	13.7	6.5	650

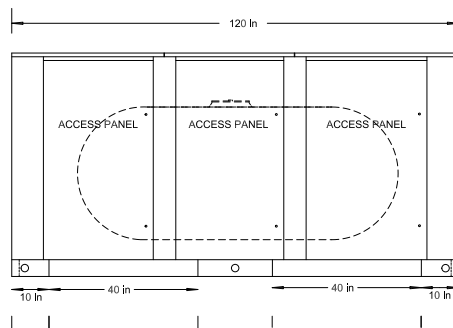


TOP VIEW

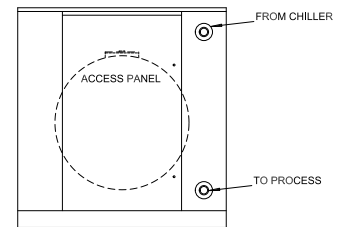


LEFT SIDE VIEW

Qty (8) 1/2" Mounting Holes



FRONT VIEW



RIGHT SIDE VIEW

J&M FLUIDICS, INC. – PRODUCT DATA SHEET